

G VISION

SERIES 2000

Operator's Manual



EPL Solutions
Electronic Pipe Locating Solutions

Table of Contents

Installing Monitor Mount 3
 Installing DVR Station, Sonde, Light dimming, Camera and Power..... 4
 LCD Monitor Controls 4
 Recording Video Using DVR 5-6
 Step by Step Recording..... 5
 Locate and Copy Recordings..... 5-6
 Copying Onto External Device..... 6
 Playback Video 6

Please Note: The section in grey is not supported by EPL Solutions. Please refer to your computer manufacturer for support if this description does not satisfy your needs.

Using Your Computer to Make a Copy of Video..... 7-8
 Using Windows XP..... 7
 Using Mac OS X..... 8

Trouble Shooting..... 9
 Contents 10
 Warranty..... 11

BEFORE PLUGGING IN MONITOR

Check the receptacle voltage with a voltmeter before plugging in your monitor. Only a qualified person should perform this test, because improper use of a voltmeter can result in shock to the user. The voltage should measure within 5 volts of the monitors rated voltage. Verify that the neutral circuit wire is properly connected. This can be proven by visual inspection of receptacle wiring.

| SPECIFICATIONS | |
|----------------------|-----------------|
| Voltage..... | 110 |
| Amps..... | 3 Amps |
| Weight | |
| Monitor and DVR..... | 6.5 lbs |
| Dimensions..... | 10.75 x 8 x 4.5 |

Installation of DVR Station, Sonde, Light Dimming, Camera and Power

(Refer to Image 14 for steps 1-6)

1. Simply rest the DVR station onto the top of the monitor and secure it using the thumb screw (A).
 2. Sonde On/Off and light dimmer button (B).
- NOTE: Default is set to high light transmitter off.**
- Press once to turn transmitter on
 - Press again to turn transmitter off (dims to medium lights)
 - Press again for low light
 - Press again to return to high lights (default)
3. Plug in the DVR station using the attached cord (C).
- NOTE: A yellow dot indicates top for easy alignment.**
4. DC Power (Optional) (D)
 5. Plug in camera (E) using the supplied camera cable.
 6. AC Power (F).

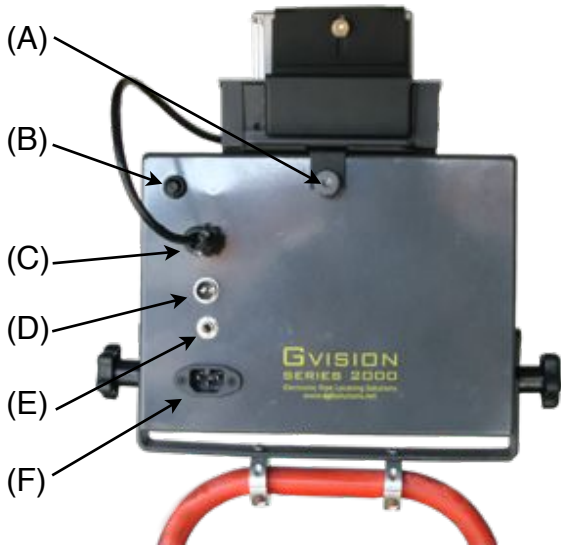


Image 14

- (A)...Thumb Screw
- (B)...Sonde On/Off
- (C)...DVR Plug
- (D)...DC Power/Battery
- (E)...Camera Plug
- (F)... AC Power

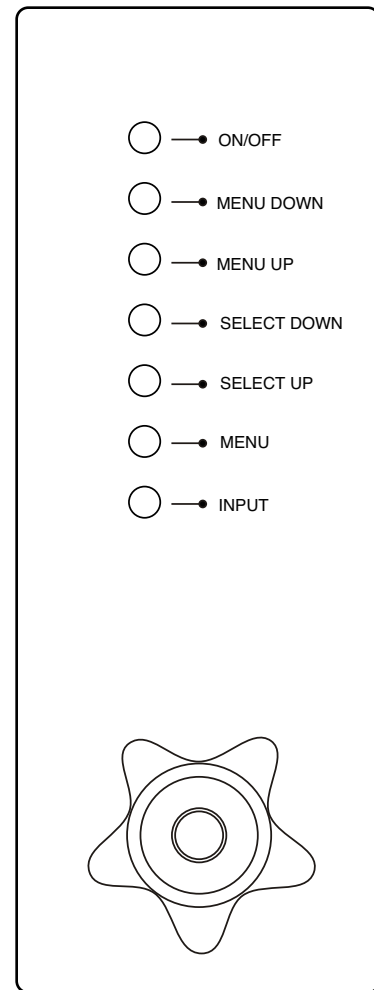
LCD Monitor Controls

Description

ON/OFF--Power switch to monitor.

MENU--Allows control of Brightness, Contrast, Saturation, Sharpness and Hue. To navigate in the MENU window use the **MENU DOWN**, **MENU UP**, **SELECT DOWN** and **SELECT UP** buttons.

INPUT--This should always be set to **AV**.



Side View of
GVISION 2000

Installation of Monitor Mount

The GVISION 2000 can be adapted to many different cameras but is not required to be mounted on the handle in order to operate. The protective face plate can also be used as a monitor stand.

1. Install the bracket directly onto the handle of the camera (Images 10-12).
2. Install the monitor onto the bracket (Image 13).

NOTE: We recommend that the notch face toward the rear of the camera system (refer to Image 12).



Image 12



Image 10



Image 11



Image 13

Recording Video Using DVR



1. Your ARCHOS needs to be connected to the DVR station and connected to the back of the GVISION 2000 as shown on page 4 item C.
2. Select the **Recorder** icon (See Image 1) and then select the **Video Recorder** folder tab on top of screen (Refer to Image 2). Please allow a few moments for the DVR to locate the camera.
3. You can now tell the ARCHOS to start recording from the camera by pushing the **OK** button. You can pause and resume your recording at any time by pushing the **OK** button.
4. Stop recording by pushing the **X** button.



Image 3

3. The pause button can be pressed during your recording without causing a break in the recording. (NOTE: The **REC** button becomes the **PAUSE** button). After your recording is complete press **X** to stop recording. Your recording is now stored on the ARCHOS device.

Locate and Copy Recordings

1. To locate your recordings you will need to return to the Home screen (See Image 1). Select the **Files** folder icon. Select **Video** (See Image 4) then **Rec** (See Image 5). Your recorded Video(s) will be under the **Rec** folder.

Step by step Recording

1. After selecting the **Recorder** icon from the Home screen (See Image 1) select **Video** tab on top of screen (See Image 2).

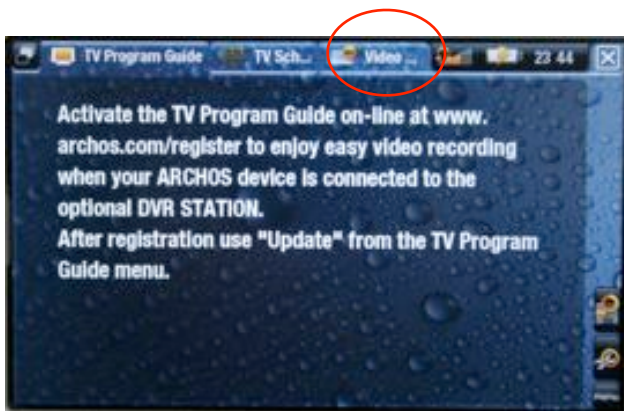


Image 2



Image 4



Image 5

2. Select the **REC** button at bottom left of screen and you will begin recording (See Image 3).

2. At this point you can rename your Video file. With your file selected, click on the icon with the pencil located at the bottom right of the screen (See Image 6) and select



Image 6

Rename. Make your changes and select **OK**.

Copying onto Flash Drive

1. To make a copy of the Video onto an external flash drive insert it into the USB-A port on the side of the ARCHOS DVR station, it will automatically mount and appear as Disk A (See Image 7). Select **Video** folder from A605 (ARCHOS drive) and then **Rec** folder and select the Video recording you want to copy.

2. Select the **Copy** icon, located at the bottom right of the screen, and select **Copy** (See Image 8). Your Video recording is now copied onto your USB Flash Drive.



Image 7



Image 8

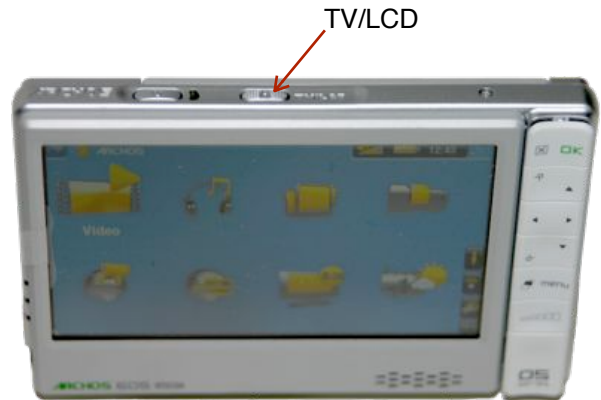
3. To **eject** the flash drive simply remove it from the DVR station.

Playback Video on ARCHOS



Select the Video icon then select Record (**Rec**). Locate the file you want to view and press **OK**.

Playback Video on Gvision



To insure the video has recorded properly, view recorded video on the **GVISION**. To do so first unplug the camera from the back of the **GVISION** (refer to **image 14** -page 4). Depress the TV/LCD button located on top of the ARCHOS, and the video will be displayed on the **GVISION** screen (refer to image below).

Shutting Off The ARCHOS



Important!!

While holding down the power button the Archos screen will first display the *Suspending* text on the screen then *Shutting Down* text.

You must hold the power button and wait for the *Shutting Down* text to display otherwise the internal battery will be left on.

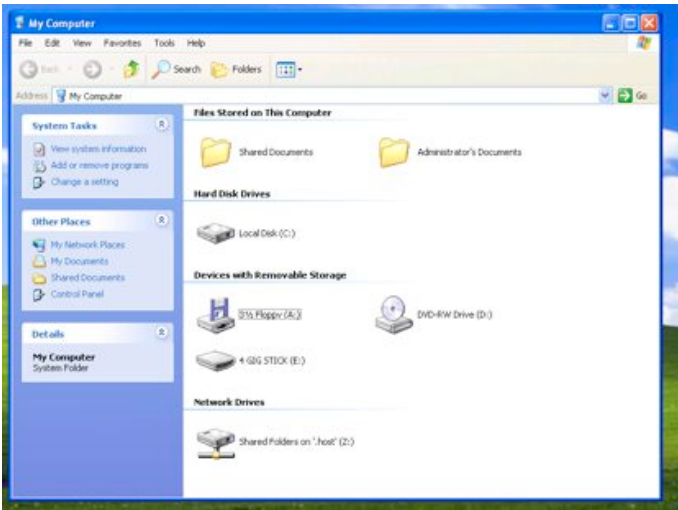


PLEASE NOTE

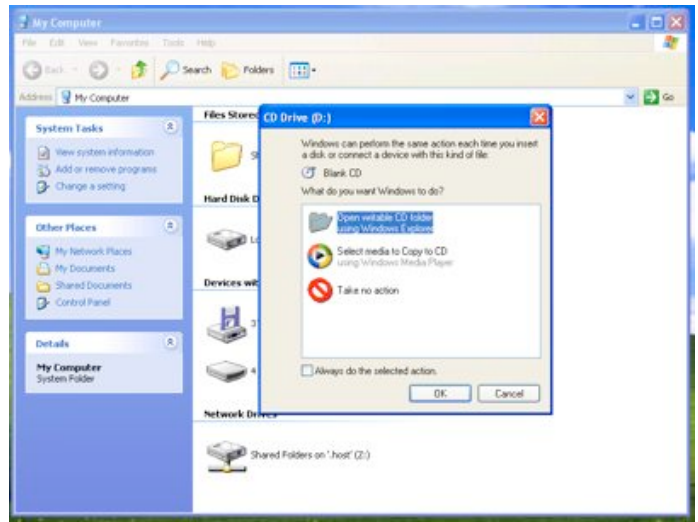
The following section is **not** supported by EPL Solutions. These are only recommendations as to how to make a copy of your video onto an Optical Disk (CD).

Windows XP Copy Video onto an Optical Disc (CD)

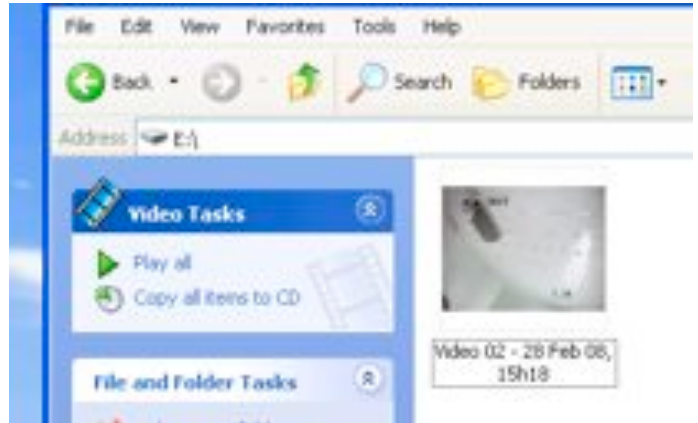
1. Insert the Flash Drive into an open USB port on your computer.
2. Click on the Flash Drive under **Devices with Removable Storage**.



3. Insert your CD into an Optical Drive.
4. Select **Open writable CD folder using Windows Explorer** and press **OK**.



5. Select **Copy all items to CD**. *Note: You should include the Divx Codec installer (supplied) at this time so the client can view the file on their computer.*



6. You can now give your CD a title. Select **Next >** and the Writing Wizard will write the data file to your CD.



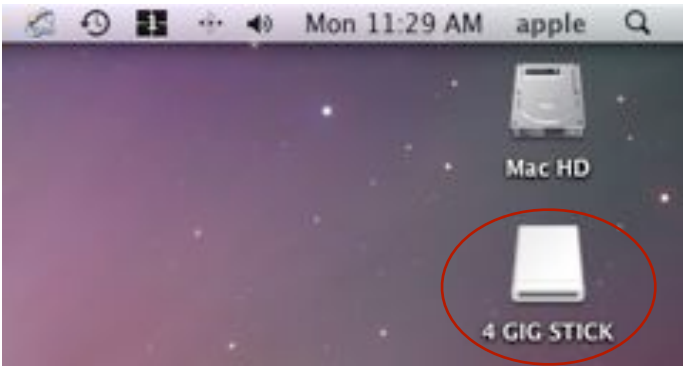
PLEASE NOTE

The following section is **not** supported by EPL Solutions. These are only recommendations as to how to make a copy of your video onto an Optical Disk (CD).

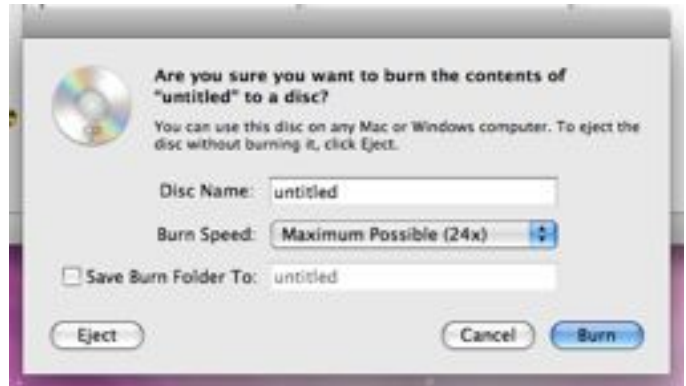
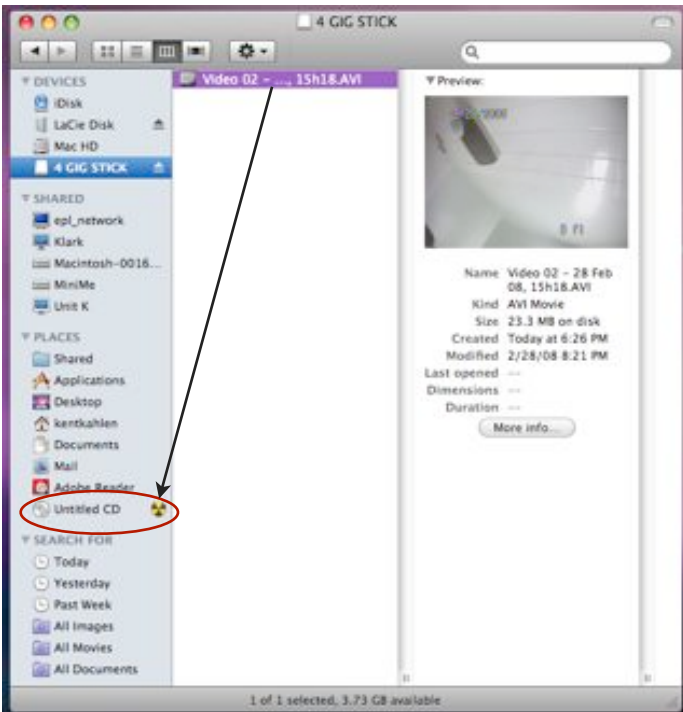
5. Hold down the **alt/option** key on the keyboard and drag the file to the untitled CD to be burned. **Note:** *You should include the Divx Codec installer (supplied) at this time so the client can view the file on their computer.*
6. Name the disk and click **Burn**.

Windows XP Copy Video onto an Optical Disc (CD)

1. Insert the Flash Drive into an open USB port on your computer.
2. Click on the Flash Drive under **Devices with Removable Storage**.



4. Insert a blank CD into the Optical Drive.



Trouble Shooting

| Problem | Solution |
|---|--|
| 1. Monitor does not turn on. | <p>Check power cable is plugged in properly.</p> <p>Insure power source is active.</p> <p>Push On/Off button on side of monitor (<i>Refer to page 4</i>)</p> <p>Insure input AV is selected (<i>Refer to page 4</i>)</p> <p>Press reset on GFCI power cable.</p> |
| 2. Camera sonde won't turn off. | Push and hold sonde button for ten (10) seconds and release. |
| 3. I have camera lights but no video. | Select input to AV (<i>Refer to page 4</i>) |
| 4. Video recorder mode is not available on DVR. | <p>Insure the DVR station cable is properly connected (<i>Refer to page 4</i>).</p> <p>Make certain the DVR station is powered on which is indicated by a green light in the front panel of the DVR station.</p> |
| 5. Copy Protected Video | Contact EPL Solutions |
| 6. ARCHOS not responding | Depress reset button located on the bottom of ARCHOS using a pin or paperclip. |
| 7. Video playback on Gvision. | Make sure the camera cord is unplugged. |

If Further Assistance is Required
 Call your local distributor or support at
 714-453-9760

Contents

GVISION MONITOR _____



Shoulder Strap _____



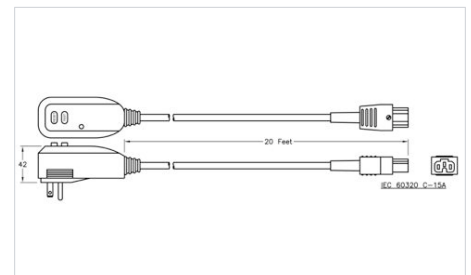
Monitor Mounting Bracket Kit _____
Includes bracket, handle and clamps.



ARCHOS 605 DVR (or similar) and DVR Station _____



Power Cord
20' GFCI 18AWG SJTOW _____



Our warranty to you:

Electronic Pipe Locating Solutions (EPL Solutions) warrants your product to be free from physical defects in material and workmanship for a period of 1(one) year from the date of the original retail purchase. If you discover a defect covered by this warranty, we will repair or replace the product at our option using new or refurbished components.

Product failures not covered by this warranty:

This warranty covers defects in manufacturing that arise from the correct use of this device. It is limited to defects in materials or workmanship and does not cover damage caused by abuse, misuse, unauthorized modification, lighting or power surge damage, extreme heat or cold, and corrosive environments. The warranty also does not cover the normal wear and tear on covers, cases, housing, connectors and accessories. The warranty does not apply to any product with a missing, altered or defaced serial number.

Limits of liability:

If these products fail or do not perform as warranted, your sole recourse shall be to repair the product as described above. We will not be liable to you or anyone else for any damages that result from the failure of this product. These damages include, but are not limited to, the following: lost profits, lost savings, lost data, damage to other equipment, and incidental or consequential damages arising from the use of or inability to use this product. Express or implied warranties are disclaimed. IN NO EVENT WILL EPL SOLUTIONS BE LIABLE FOR MORE THAN THE AMOUNT OF YOUR PURCHASE PRICE, NOT TO EXCEED THE CURRENT LIST PRICE OF THE PRODUCT.

EPL Solutions specifically disclaims all other warranties, expressed or implied, and the user shall deem the installation or use of this product an acceptance of these terms.

How to obtain service under this warranty:

Return Merchandise Authorization (RMA) Numbers are required for all product returns by doing one of the following:

- ◆ Complete a request on our web site at <http://www.eplsolutions.net/support>
- ◆ By sending an email to returns@eplsolutions.net
- ◆ By calling 714-453-9760 and speaking to a Technical Support Engineer

Once an EPL Solutions Technical Support Engineer verifies you have a hardware problem that requires you to return your product, you will be provided with an RMA number. You must acquire an RMA number and deliver the defective unit to EPL Solutions in order to obtain service under this warranty. A sales receipt may be required to verify the original retail purchase. All returned units must have the RMA number visible on the outside of the shipping package. You must either use the original packing or pack the unit securely to avoid damage during shipping. Return Authorizations are valid for 30 days after the RMA number is issued. Ship your product pre-paid to EPL Solutions at the following address:

EPL Solutions
RMA#:XXXXXX
1650-K North Glassell Street
Orange, CA 92867 USA

EPL Solutions will pay the return shipping costs for products under warranty. EPL Solutions is not responsible for the cost of shipping to EPL Solutions or the payment of any customs clearance fees or duties.

Notes

EPL Solutions

Electronic Pipe Locating Solutions

Orange, CA

714-453-9760

www.EPLSolutions.net

info@EPLsolutions.net

Our purpose is to provide a high quality monitor/recording system that is more portable, easier to use, and easily adaptable to most cameras on the market.