

# G VISION

SERIES 2000

## Operator's Manual



**EPL Solutions**  
Electronic Pipe Locating Solutions  
Gvision Operation Manual-Rev 1

# Table of Contents

Installing Monitor Mount ..... 3  
 Installing DVR Station, Sonde, Camera and Power..... 4  
 LCD Monitor Controls ..... 4  
 Recording Video Using DVR ..... 5-6  
     Step by Step Recording..... 5  
     Recording Audio..... 5  
     Locate and Copy Recordings..... 5-6  
 Copying Onto External Device..... 6  
 Playback Video..... 6

**Please Note:** The section in grey is not supported by EPL Solutions. Please refer to your computer manufacturer for support if this description does not satisfy your needs.

Using Your Computer to Make a Copy of Video..... 7-8  
     Using Windows XP..... 7  
     Using Mac OS X..... 8

Trouble Shooting..... 9  
 Contents ..... 10  
 Warranty..... 11

## BEFORE PLUGGING IN MONITOR

Check the receptacle voltage with a voltmeter before plugging in your monitor. Only a qualified person should perform this test, because improper use of a voltmeter can result in shock to the user. The voltage should measure within 5 volts of the monitors rated voltage. Verify that the neutral circuit wire is properly connected. This can be proven by visual inspection of receptacle wiring.

**SPECIFICATIONS**

Voltage..... 110  
 Amps..... 3 Amps

Weight  
 Monitor and DVR..... 6.5 lbs

Dimensions..... 10.75 x 8 x 4.5

## Installation of Monitor Mount

The GVISION 2000 can be adapted to many different cameras but is not required to be mounted on the handle in order to operate. The protective face plate can also be used as a monitor stand.

1. Install the bracket directly onto the handle of the camera (Images 1-3).
2. Install the monitor onto the bracket (Image 4).

NOTE: We recommend that the notch face toward the rear of the camera system (refer to Image 3).

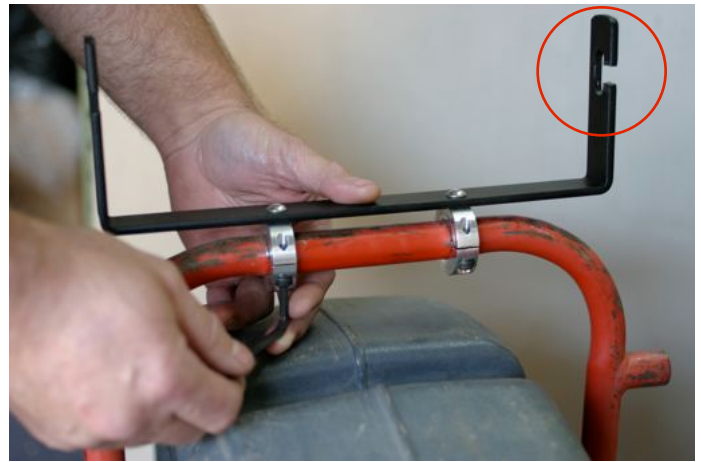


Image 3



Image 1



Image 4

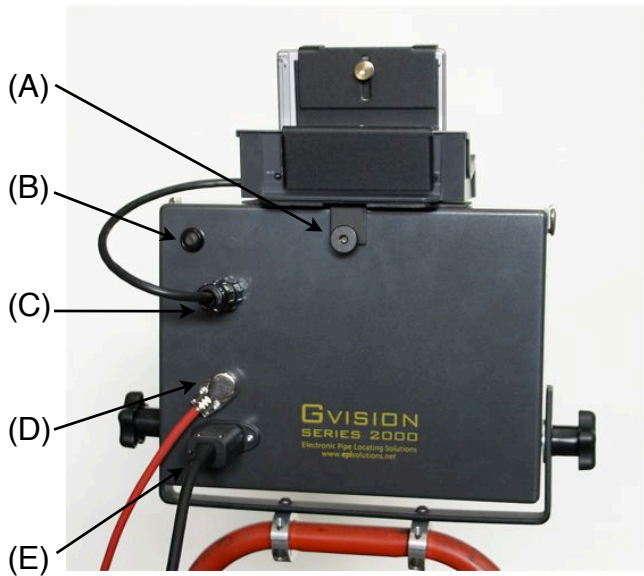


Image 2

# Installation of DVR Station, Sonde, Camera and Power

(Refer to Image 5 for steps 1-5)

1. Simply rest the DVR station onto the top of the monitor and secure it using the thumb screw (A).
2. Sonde On/Off button (B). **NOTE:** *Quickly press and release button to turn sonde on. Press and hold for 10 seconds to turn sonde off.*
3. Plug in the DVR station using the attached cord (C).
4. Plug in camera (D) using the supplied camera cable.
5. Plug in power (E).



**Image 5**

- (A)...Thumb Screw
- (B)...Sonde On/Off Button
- (C)...DVR Plug
- (D)...Camera Plug
- (E)...Power Cord

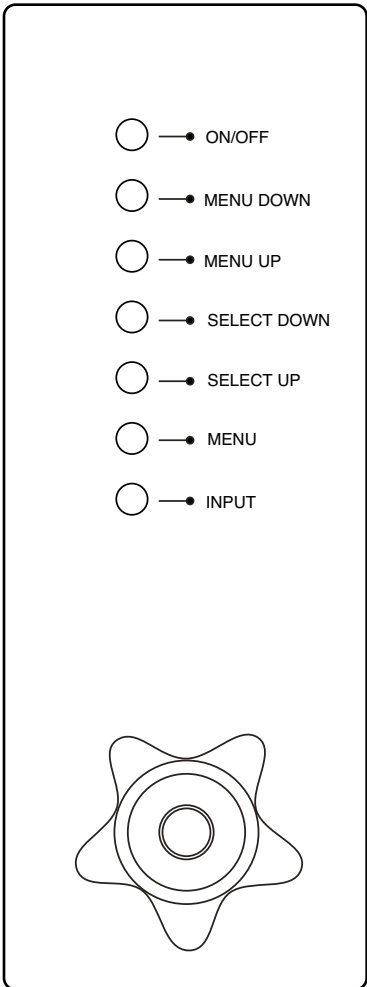
# LCD Monitor Controls

## Description

**ON/OFF**--Power switch to monitor.

**MENU**--Allows control of Brightness, Contrast, Saturation, Sharpness and Hue. To navigate in the MENU window use the **MENU DOWN**, **MENU UP**, **SELECT DOWN** and **SELECT UP** buttons.

**INPUT**--This should always be set to **AV**.



Side View of  
**GVISION 2000**

# Recording Video Using DVR

After your recording is complete press **X** to stop recording. Your recording is now stored on the ARCHOS device.



Speaker volume.



VU Meter Image 8 Mic Gain Control

1. Place the ARCHOS into the DVR station and plug it into the back of the GVISION 2000 as shown on page 4 item C.
2. Select the **Recorder** icon (refer to Image 6) and then select the **Video** recorder folder tab at the top of the screen (refer to Image 7). Please allow a few moments for the DVR to locate the camera.
3. You can begin recording by pressing the **OK** button. Pause and resume your recording at any time by pushing the **OK** button.
4. Press the **X** button to stop the video recording.

## Recording Audio

Audio can be added at any time during the video recording by switching **on** the Microphone Switch located on the base station (refer to Image 6). **The red LED indicates your microphone is turned on and recording.** The VU Meter will slide left to right indicating that your microphone is on (refer to Image 8).

## Step by Step Recording

1. After selecting the **Recorder** icon from the Home screen (refer to Image 6) select the **Video** tab at the top of the screen (refer to Image 7).
2. Select the **REC** button at bottom left of screen to begin recording (refer to Image 8).

## Locate Recordings

1. To locate your recordings you will need to return to the Home screen (refer to Image 6). Select the **Files** folder icon. Select **Video** (refer to Image 9) then **Rec** (See Image 10). Your recorded Video(s) will be under the **Rec** folder.

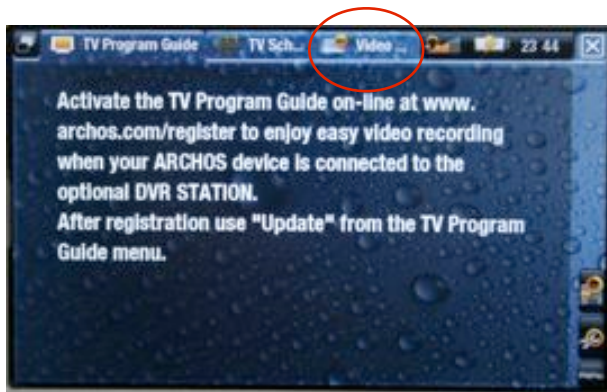


Image 7



Image 9



Image 10

3. The pause button can be pressed during your recording without causing a break in the recording. (NOTE: The **REC** button becomes the **PAUSE** button).

2. At this point you can rename your Video file. With your file selected, click on the icon with the pencil located at the bottom right of the screen (See Image 6) and select **Rename**. Make your changes and select **OK**.



Image 11

## Copying onto Flash Drive

1. To make a copy of the Video onto an external flash drive insert it into the USB-A port on the side of the ARCHOS DVR station, it will automatically mount and appear as Disk A (See Image 7). Select **Video** folder from A605 (ARCHOS drive) and then **Rec** folder and select the Video recording you want to copy.



Image 12

2. Select the **Copy** icon, located at the bottom right of the screen, and select **Copy** (See Image 13). Your Video recording is now copied onto your USB Flash Drive.



Image 13

3. To **eject** the flash drive simply remove it from the DVR station.

## Playback Video on ARCHOS



Image 14

Select the Video icon then select Record (**Rec**). Locate the file you want to view and press **OK**.

## Playback Video on Gvision

To insure the video has recorded properly, view recorded video on the **GVISION**. To do so first unplug the camera from the back of the **GVISION** (refer to **image 14** -page 4). Depress the TV/LCD button located on top of the ARCHOS, and the video will be displayed on the **GVISION** screen (refer to image below).

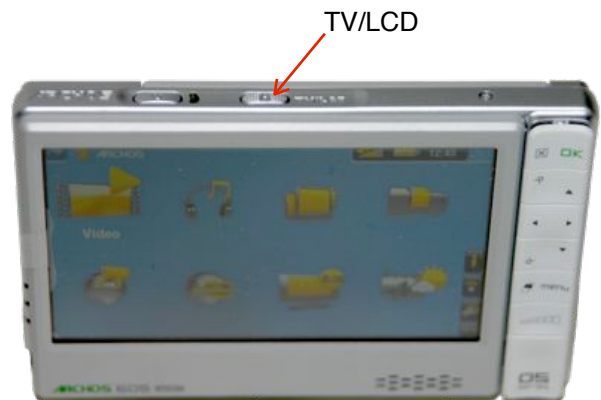


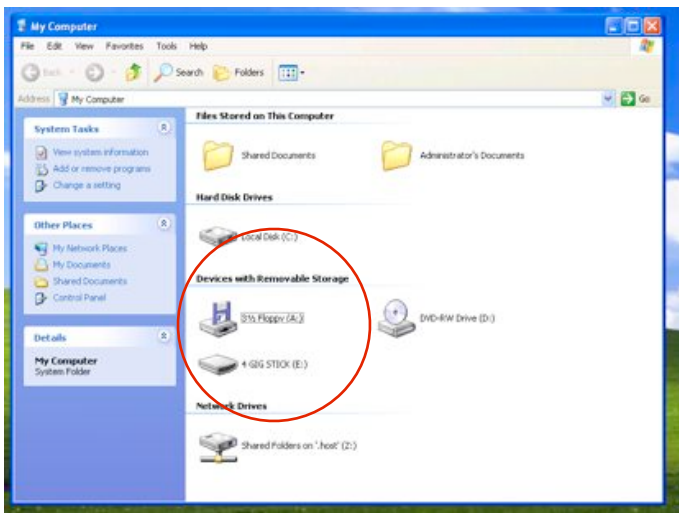
Image 15

**PLEASE NOTE**

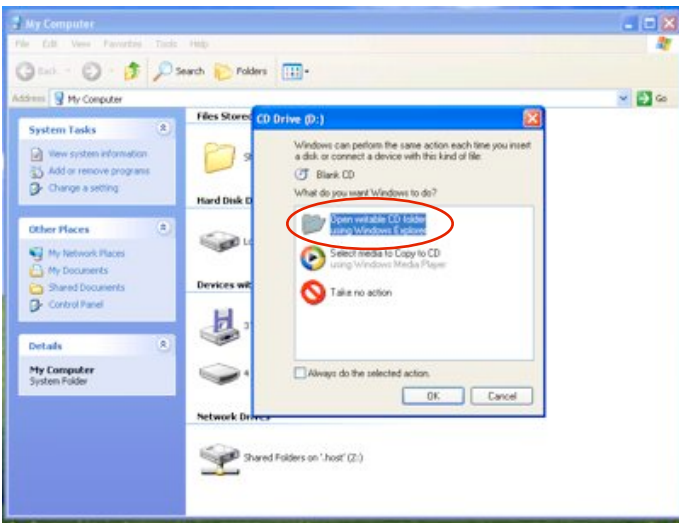
The following section is **not** supported by EPL Solutions. These are only recommendations as to how to make a copy of your video onto an Optical Disk (CD).

## Windows XP Copy Video onto an Optical Disc (CD)

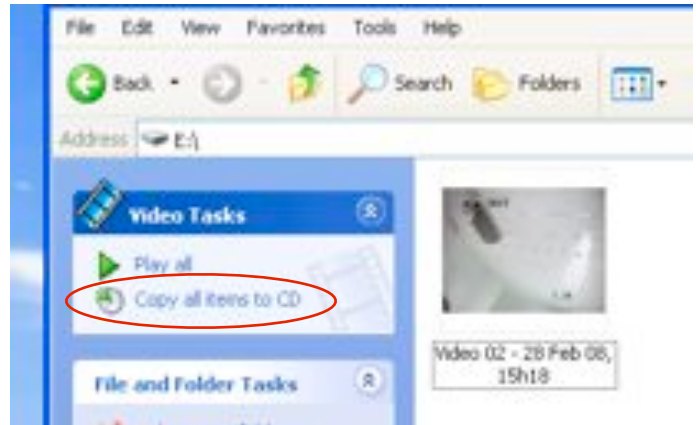
1. Insert the Flash Drive into an open USB port on your computer.
2. Click on the Flash Drive under **Devices with Removable Storage**.



3. Insert your CD into an Optical Drive.
4. Select **Open writable CD folder** using Windows Explorer and press OK.



5. Select **Copy all items to CD**. *Note: You should include the Divx Codec installer (supplied) at this time so the client can view the file on their computer.*



6. You can now give your CD a title. Select **Next >** and the Writing Wizard will write the data file to your CD.



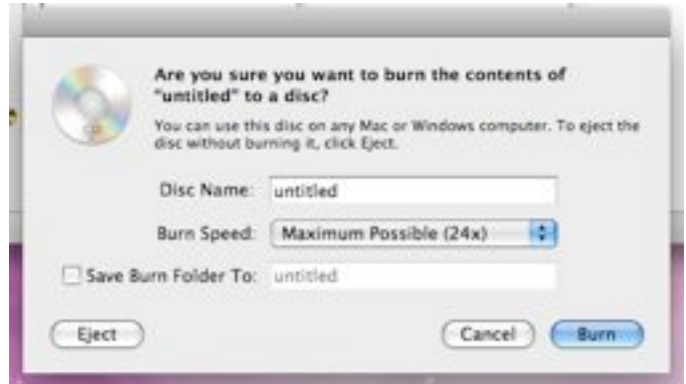
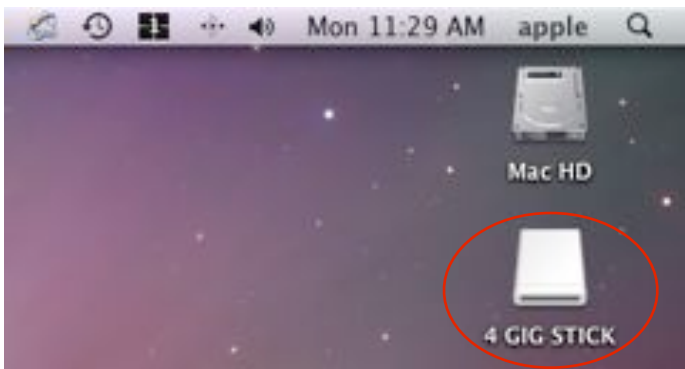
**PLEASE NOTE**

The following section is **not** supported by EPL Solutions. These are only recommendations as to how to make a copy of your video onto an Optical Disc (CD).

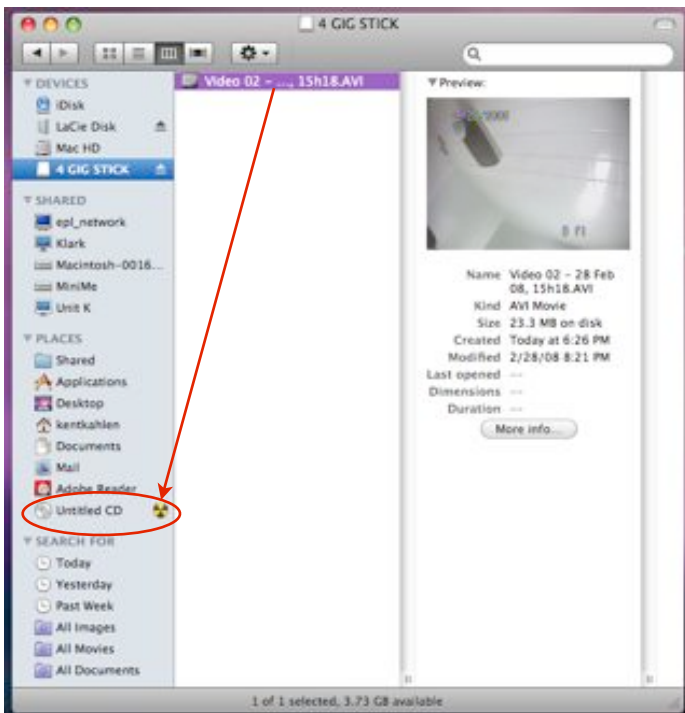
5. Hold down the **alt/option** key on the keyboard and drag the file to the untitled CD to be burned. **Note:** *You should include the Divx Codec installer (supplied) at this time so the client can view the file on their computer.*
6. Name the disk and click **Burn**.

## Mac OS X Copy Video onto an Optical Disc (CD)

1. Install Divx Codec from supplied CD if needed for Quicktime playback or VLC Player.
2. Insert the Flash Drive into an open USB port. *(It will mount on the Desktop automatically).*
3. Select the Flash Drive.



4. Insert a blank CD into the Optical Drive.



## Trouble Shooting

Problem	Solution
1. Monitor does not turn on.	<p>Check power cable is plugged in properly.</p> <p>Insure power source is active.</p> <p>Push On/Off button on side of monitor (<i>Refer to page 4</i>)</p> <p>Insure input AV is selected (<i>Refer to page 4</i>)</p> <p>Press reset on GFCI power cable.</p>
2. Camera sonde won't turn off.	Push and <b>hold</b> sonde button for ten (10) seconds and release.
3. I have camera lights but no video.	Select input to AV ( <i>Refer to page 4</i> )
4. Video recorder mode is not available on DVR.	<p>Insure the DVR station cable is properly connected (<i>Refer to page 4</i>).</p> <p>Make certain the DVR station is powered on which is indicated by a green light in the front panel of the DVR station.</p>
5. Copy Protected Video	Contact EPL Solutions
6. ARCHOS not responding	Depress reset button located on the bottom of ARCHOS using a pin or paperclip.
7. Video playback on Gvision.	Make sure the camera cord is unplugged.

If Further Assistance is Required  
 Call your local distributor or EPL SOLUTIONS support at 714-453-9760

# Contents

GVISION MONITOR



Shoulder Strap



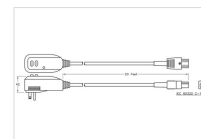
Monitor Mounting Bracket Kit



ARCHOS 605 DVR (or comparable)  
and DVR Station



Power Cord  
20' GFCI 18AWG SJTOW



## Our warranty to you:

Electronic Pipe Locating Solutions (EPL Solutions) warrants your product to be free from physical defects in material and workmanship for a period of 1(one) year from the date of the original retail purchase. If you discover a defect covered by this warranty, we will repair or replace the product at our option using new or refurbished components.

### Product failures not covered by this warranty:

This warranty covers defects in manufacturing that arise from the correct use of this device. It is limited to defects in materials or workmanship and does not cover damage caused by abuse, misuse, unauthorized modification, lightning or power surge damage, extreme heat or cold, and corrosive environments. The warranty also does not cover the normal wear and tear on covers, cases, housing, connectors and accessories. The warranty does not apply to any product with a missing, altered or defaced serial number.

### Limits of liability:

If these products fail or do not perform as warranted, your sole recourse shall be to repair the product as described above. We will not be liable to you or anyone else for any damages that result from the failure of this product. These damages include, but are not limited to, the following: lost profits, lost savings, lost data, damage to other equipment, and incidental or consequential damages arising from the use of or inability to use this product. Express or implied warranties are disclaimed. IN NO EVENT WILL EPL SOLUTIONS BE LIABLE FOR MORE THAN THE AMOUNT OF YOUR PURCHASE PRICE, NOT TO EXCEED THE CURRENT LIST PRICE OF THE PRODUCT.

EPL Solutions specifically disclaims all other warranties, expressed or implied, and the user shall deem the installation or use of this product an acceptance of these terms.

How to obtain service under this warranty:

Return Merchandise Authorization (RMA) Numbers are required for all product returns by doing one of the following:

- ◆ Complete a request on our web site at <http://www.eplsolutions.net/support>
- ◆ By sending an email to [returns@eplsolutions.net](mailto:returns@eplsolutions.net)
- ◆ By calling 714-453-9760 and speaking to a Technical Support Engineer

Once an EPL Solutions Technical Support Engineer verifies you have a hardware problem that requires you to return your product, you will be provided with an RMA number. You must acquire an RMA number and deliver the defective unit to EPL Solutions in order to obtain service under this warranty. A sales receipt may be required to verify the original retail purchase. All returned units must have the RMA number visible on the outside of the shipping package. You must either use the original packing or pack the unit securely to avoid damage during shipping. Return Authorizations are valid for 30 days after the RMA number is issued. Ship your product pre-paid to EPL Solutions at the following address:

EPL Solutions  
RMA#:XXXXXX  
1650-K North Glassell Street  
Orange, CA 92867 USA

EPL Solutions will pay the return shipping costs for products under warranty. EPL Solutions is not responsible for the cost of shipping to EPL Solutions or the payment of any customs clearance fees or duties.

# **EPL Solutions**

**Electronic Pipe Locating Solutions**

**Orange, CA**

**714-453-9760**

**[www.EPLSolutions.net](http://www.EPLSolutions.net)**

**[info@EPLsolutions.net](mailto:info@EPLsolutions.net)**

Our purpose is to provide a high quality monitor/recording system that is more portable, easier to use, and easily adaptable to most cameras on the market.